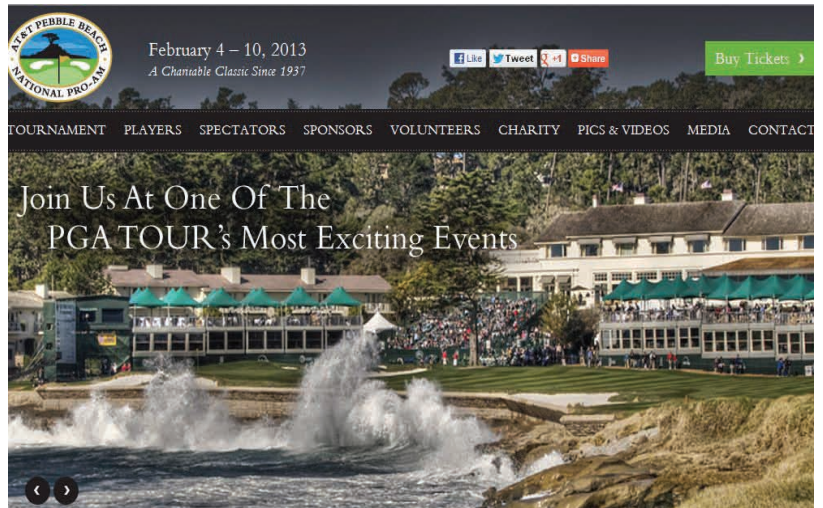


GST Tracking Solution with AT&T Handsets

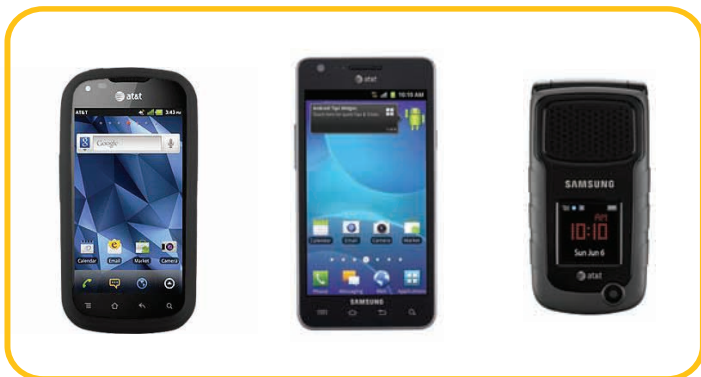
for First Responders



Public safety agencies must always be ready to respond to situations surpassing normal-day scenarios. How to quickly and effectively mobilize additional resources, and provide these added resources with proper communication equipment in special events or major incidents, has become a tough challenge to first responders throughout the nation, especially during this economic downturn when budgets are extremely tight. AT&T together with GeoSpatial Technologies, Inc. (GST), provide a cost-effective solution that can be easily deployed with a short notice, built on AT&T's latest high-speed wireless infrastructure and GST's cutting-edge handset tracking technology.

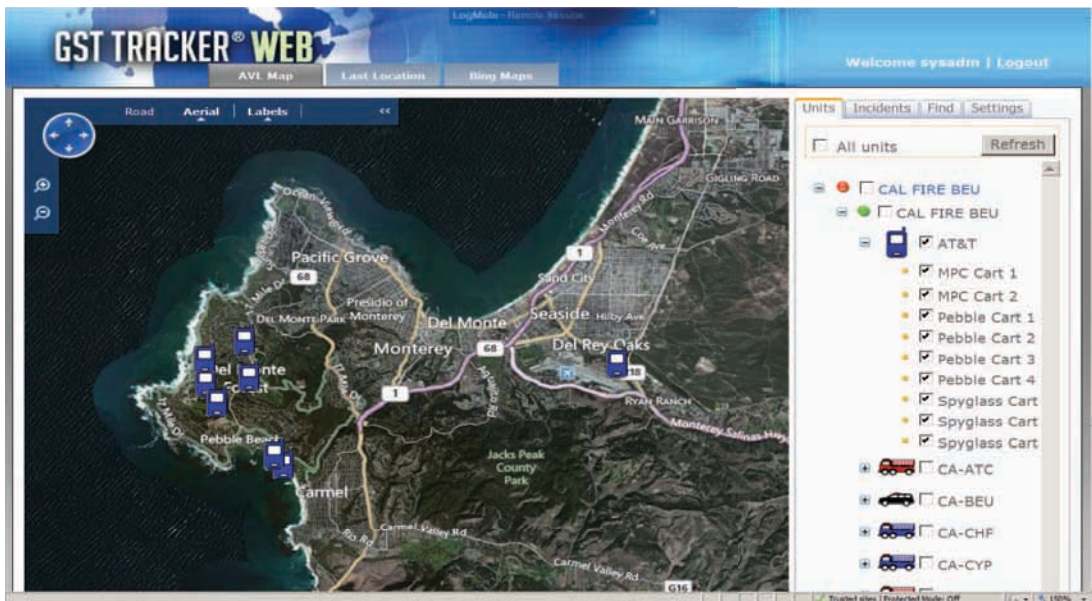


San Benito Monterey Unit (BEU), California Department of Forestry and Fire Protection (CAL FIRE), faced a tough challenge to provide critical support during the AT&T Pebble Beach National Pro-Am Golf Tournament in February, 2013. In order to dispatch the closest unit to respond to any incident throughout San Benito and Monterey Counties, BEU has been using GST Tracker to locate their vehicles in real time. During this world-renown golf tournament attended by a very large crowd, BEU needed to deploy ten medical carts throughout the course. These carts had to be equipped with a cost-effective tracking device that can be easily and quickly deployed.



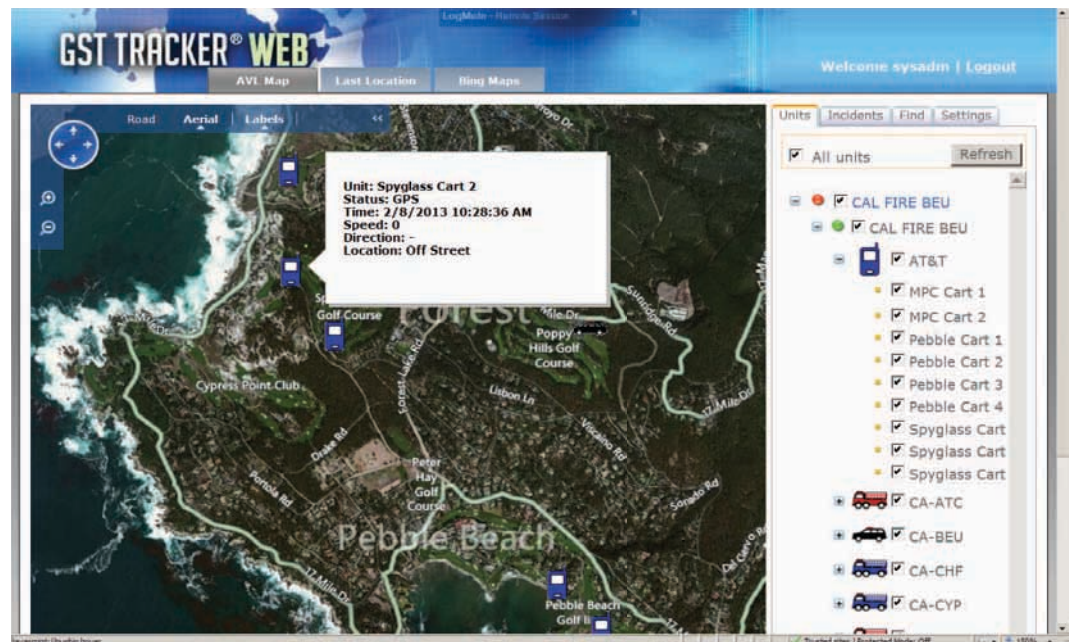
Pantech Burst P9070, Samsung Galaxy S II, and Samsung Rugby II handsets were deployed to medical carts during 2013 AT&T Pebble Beach Pro-Am Tournament

To support this event, AT&T provided ten handheld devices of three different models, Pantech Burst P9070, Samsung Galaxy S II, and Samsung Rugby II. All these devices were loaded with GST mobile application and registered to GST Tracker Server hosted by BEU. The devices were distributed to those medical carts daily. Their current locations were clearly displayed on GST Viewer screen in the dispatch center. Although there were just a few minor incidents, each time when there was a need, the closest cart was dispatched and medical services were provided in a timely manner.



AT&T handsets were distributed to medical carts throughout the course

The AT&T-GST solution has proven to be the cost-effective solution to all public safety and law-enforcement agencies for easily deployable tracking devices that can either be incorporated into their existing tracking system, or become a standalone system for emergency response. Knowing the whereabouts of those additional resources offers dispatchers, watch commanders, and Emergency Operation Centers the situational awareness that is extremely valuable in any mission-critical operation.



The system enables CAL FIRE to dispatch the closest medical cart to any incident



GEOSPATIAL TECHNOLOGIES, INC. 10055 Slater Ave., Ste. 214 Fountain Valley, CA 92708 T. 714. 861. 7033 F. 714. 861. 7032 info@geospatialtech.com

©2013 AT&T. AT&T and the logo are trademarks of AT&T. Samsung Galaxy S2 and Samsung Rugby 2 are registered trademarks of Samsung Group. Pantech Burst P9070 is a registered trademark of Pantech. GST and

the GST logo are registered trademarks of GeoSpatial Technologies, Inc. All rights reserved.